

The Gazette

www.GazetteXtra.com | \$2.50

Monday, April 6, 2026

NO ONE DELIVERS

Local

LIKE WE DO

UW-Whitewater names Founders Day Award recipients

GAZETTE STAFF

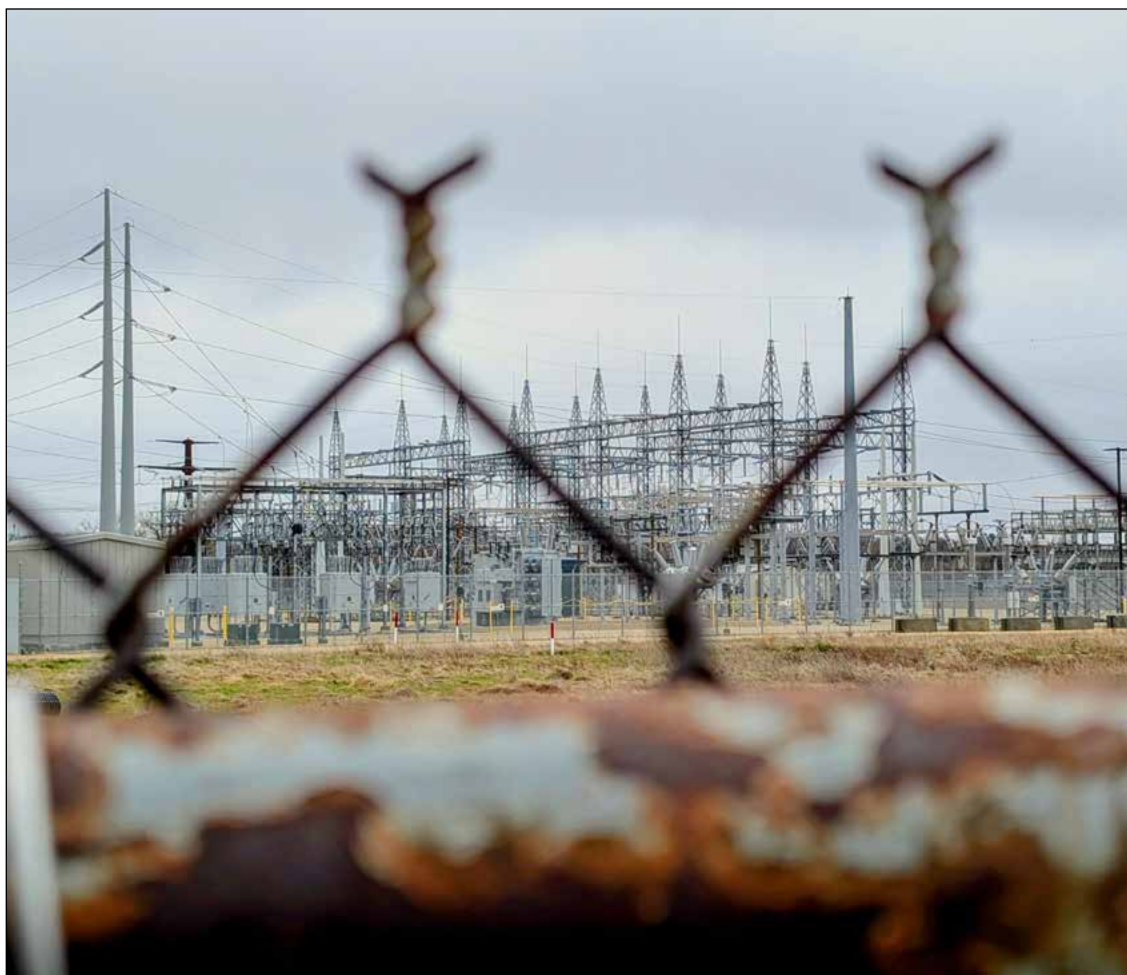
WHITEWATER — Six individuals who have achieved exceptional professional success or have made significant contributions to the University of Wisconsin-Whitewater will be honored later this month.

The 2026 Founders Day Award recipients include “a recent graduate who is both a senior leader in education and an acclaimed DJ, an avid supporter who was meaningfully involved in the recent release of the campus literary journal “Either/Or,” and an alum whose service to Whitewater — from board membership on the foundation to significant donations to support of student success to showing up to events big and small to help in any way needed — is being celebrated,” the university said in a release.

The awards will be presented at the 2026 Founders Day Celebration, held at UW-Whitewater on Saturday, April 18.

This year’s outstanding recent alum is Kyree Brooks, who earned a BSE in physical education in 2017. After earning a master’s degree in rehabilitation psychology

More **FOUNDERS** | A2



NEIL JOHNSON/NEIL.JOHNSON@APG-SW.COM

Alliant Energy’s Riverside Energy Center in the town of Beloit Saturday, April 4, 2026. The power plant opened in 2004 at 1401 W. BR Townline Road. According to Alliant’s website, www.alliantenergy.com/our-energy/natural-gas/riverside, it’s due for modernization expected to be completed in 2028.

‘Extreme demand shock’

Data center boom raises electrical grid reliability questions

KYLIE BALK-YAATENEN
kylie.balkyaatenen@ap-sw.com

JANESVILLE — As Wisconsin continues to be flooded by new data center proposals, with more expected in coming years, UW-Madison data science researchers are raising alarms about whether the state’s existing electrical

power grid can handle the anticipated rising load.

Utility companies like Alliant Energy, and multi-state energy transmission system operator MISO respond that they’re prepared to shoulder an expected, and unprecedented, massive spike in demand from such hyperscale projects.

GM SITE DATA CENTER

The rising questions about statewide and Midwest region-wide electrical power

grid reliability is key for Janesville, where an 800-megawatt data center is proposed to go on the 250-acre former General Motors

assembly plant site on the city’s southside.

GM closed the plant at the end of 2008,

More **ENERGY** | A6

LOCAL

Chicago-based banking company investing in Beloit

PAGE A2

NATION/ WORLD

Serviceman rescued in Iran

PAGE A7

TODAY’S WEATHER

HIGH LOW
46 | **23**

Sun and clouds; becoming windier
More on A23

Local A3, A6
Calendar A4
Obituaries A5
Nation/World A7
Legals A9-A11
Classifieds A12-A13
Advice A14-A16
Comics, Puzzles A14-A16
Sports A17-A24
Weather A23

Adams MultiMedia
©2026. All rights reserved.



(MAILING LABEL ONLY)