



## SpaceX's listing could drown out IPO market

BUSINESS, 9A

# PUBLIC OPINION

THURSDAY, APRIL 9, 2026 | PUBLICOPINIONONLINE.COM

PART OF THE USA TODAY NETWORK

## Franklin County company to lay off 307 workers

**Amber South**  
Chambersburg Public Opinion  
USA TODAY NETWORK - PENNSYLVANIA

A company at Letterkenny Army Depot in Franklin County will lay off more than 300 employees next month, according to the Pennsylvania Department of Labor.

Bowhead Logistics Management filed a WARN notice that it plans to lay off 307 employees as of May 10.

Located at 1350 Superior Ave., Building 57, Chambersburg, Bowhead provides maintenance and logistics support services to Letterkenny and other government agencies, according to the

company's website.

Services include staff augmentation, food service, warehousing, vehicle and equipment maintenance, small arms maintenance, vessel operations and maintenance, port and base operations and more.

Bowhead was formerly known as SharpMinds LLC and was acquired by the UIC Government Services holding company.

Despite the layoffs, the company's website shows the Chambersburg plant is hiring for a paint prep worker at \$28.61/hour. Bowhead's careers webpage shows it nearly 70 plants in the U.S.

The company is one of two in Pennsylvania to announce layoffs in April, according to new data from Pennsylvania's Department of Labor website.

LNS Chipblaster, Meadville, filed a WARN notice that 67 employees will lose their jobs when the plant in North West Pennsylvania shuts down on Sept. 30.

### More than 3,500 job losses in 2026 so far in Pennsylvania

Last month, more than 900 employees were affected by job losses due to layoffs and shutdowns at six companies across the Commonwealth, according to the department's website.

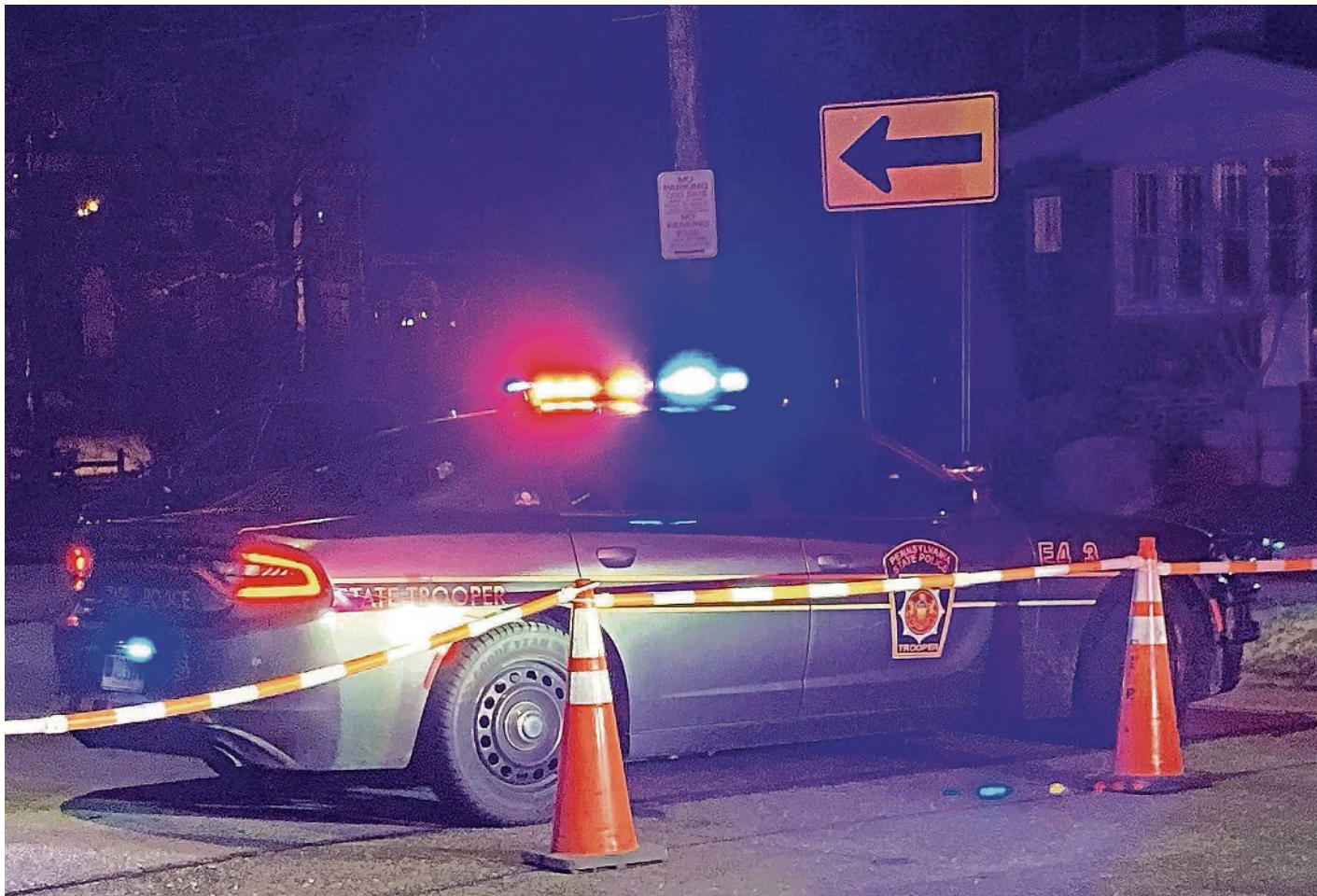
Not including the WARN notices filed in April, mass layoffs and plant closures resulted in 3,693 job losses in Pennsylvania so far this year, according to the department's data.

Last year, around 14,751 employees in Pennsylvania were laid off due to branch closures or mass layoffs.

According to data available starting in 1988, approximately 6,000 employees affected by a layoff or branch closure issued by Great Arrow Builders - LLC in August 2020 is the largest number of employees affected by a single WARN notice in Pennsylvania.

Amber South can be reached at [asouth@publicopinionnews.com](mailto:asouth@publicopinionnews.com).

## At least 8 dead after police pursuits



Hundreds of people die each year during police pursuits, according to research. ED PALATTELLA/ERIE TIMES-NEWS

### Practice controversial for the dangers involved

**Thao Nguyen**  
USA TODAY

A string of high-speed police car chases resulted in at least eight deaths and several injuries over a span of less than a week, marking the latest deadly

incidents in an upward trend of police pursuit fatalities in the United States.

In Texas, police said a man died early on April 5, after fleeing from officers and crashing off the roadway.

The Montgomery Advertiser, part of the USA TODAY Network, reported that four people died after a driver attempted to evade a state trooper and struck a tree in rural Alabama on April 3.

In Southern California, authorities

said three people were killed in separate incidents after local law enforcement tried to pursue two suspects who then collided with other vehicles.

Hundreds of people die each year during police pursuits, according to experts and research. The longstanding police practice has faced criticism for years.

See PURSUITS, Page 3A

## Maryland man killed in construction site accident in Chambersburg

**Amber South**  
Chambersburg Public Opinion  
USA TODAY NETWORK - PENNSYLVANIA

A young man from Smithsburg, MD, died late last week during an accident at a construction site in Franklin County, according to Pennsylvania State Police.

Dalen Martin, 20, was found unconscious in a collapsed trench at about 2 p.m. April 2 at a construction site in the 700 block of Clover Drive, Hamilton Township, according to a report released on April 6.

**Clover Drive is located in a housing development just south of Lincon Way West (U.S. 30) and a couple miles west of Chambersburg borough.**

He died as a result of the injuries he suffered, police said. The investigation has been closed.

Clover Drive is located in a housing development just south of Lincon Way West (U.S. 30) and a couple miles west of Chambersburg borough.

Franklin Fire Company, Chambersburg, reported information on the trench collapse live from the scene in a Facebook post at 2:11 p.m. April 2. In a "3 pm update" posted shortly before 4 p.m., the fire company shared that the victim had died.

The fire company reported that Chambersburg Fire Department, Letterkenny Army Depot Fire Department and West End Fire and Rescue of Shippenburg also responded to the scene.

**TRAINED AND CERTIFIED**

**BASEMENT**

**— WATERPROOFING EXPERTS —**

- FOUNDATION REPAIR
- BASEMENT WATERPROOFING
- CRAWL SPACE REPAIR
- CONCRETE LIFTING

LIMITED TIME OFFER  
**\$500 OFF\***

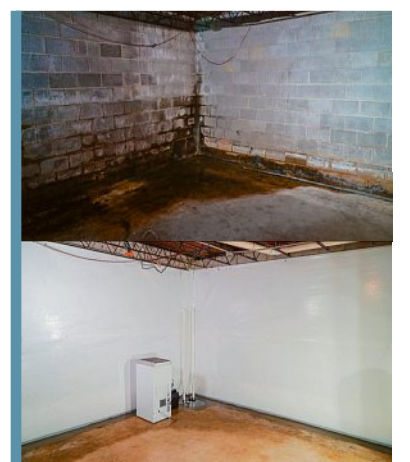
**Groundworks®**  
Foundation Solutions Crafted with Pride.

FREE INSPECTION



223-220-3118

\*Ten percent off any job over \$2500 up to a max of \$500. Coupon must be presented at time of inspection. Offer may not be combined with any other offer. Limit one per customer. Ask inspector for further details. Promo valid through 04/30/2026. For state licenses visit [Groundworks.com/licensing](http://Groundworks.com/licensing)



### Subscriber-only eNewspaper

The eNewspaper is an electronic copy of your print newspaper. Enjoy every page by going to [publicopiniononline.com/enewspaper](http://publicopiniononline.com/enewspaper) or scan this code on your mobile device. You will also find late news and sports in the bonus sections. Check it out today!



Volume 157, Issue 222  
Subscribe 717-264-6164  
©2026 \$2.00



0 40901 12345 3