



## 10 best games of Week 1 of the college football season

SPORTS, 1B

# Record Searchlight

TUESDAY, AUGUST 26, 2025 | REDDING.COM

PART OF THE USA TODAY NETWORK

## Tyler McCain makes court appearance after arrest

**Michele Chandler**  
Redding Record Searchlight  
USA TODAY NETWORK

Tyler McCain, accused of killing his wife, Nikki Cheng Saelee McCain, after a domestic dispute, pleaded not guilty on Friday to a charge of murder in the first degree and several other charges he is facing in connection to the homicide case.

Shasta County Superior Court Judge Adam Ryan ordered Tyler McCain continue to be held without bail, despite a request from his defense attorney, Michael Borges, for the judge to reconsider. Ryan cited the various charges against Tyler McCain before saying they were “sufficient to hold the defendant without bail.”

McCain, who was arrested on

Wednesday morning, will remain in the Shasta County Jail. A preliminary hearing in the case is scheduled for Sept. 3, the Shasta County District Attorney’s Office said. That hearing could last over several days, the DA’s Office said.

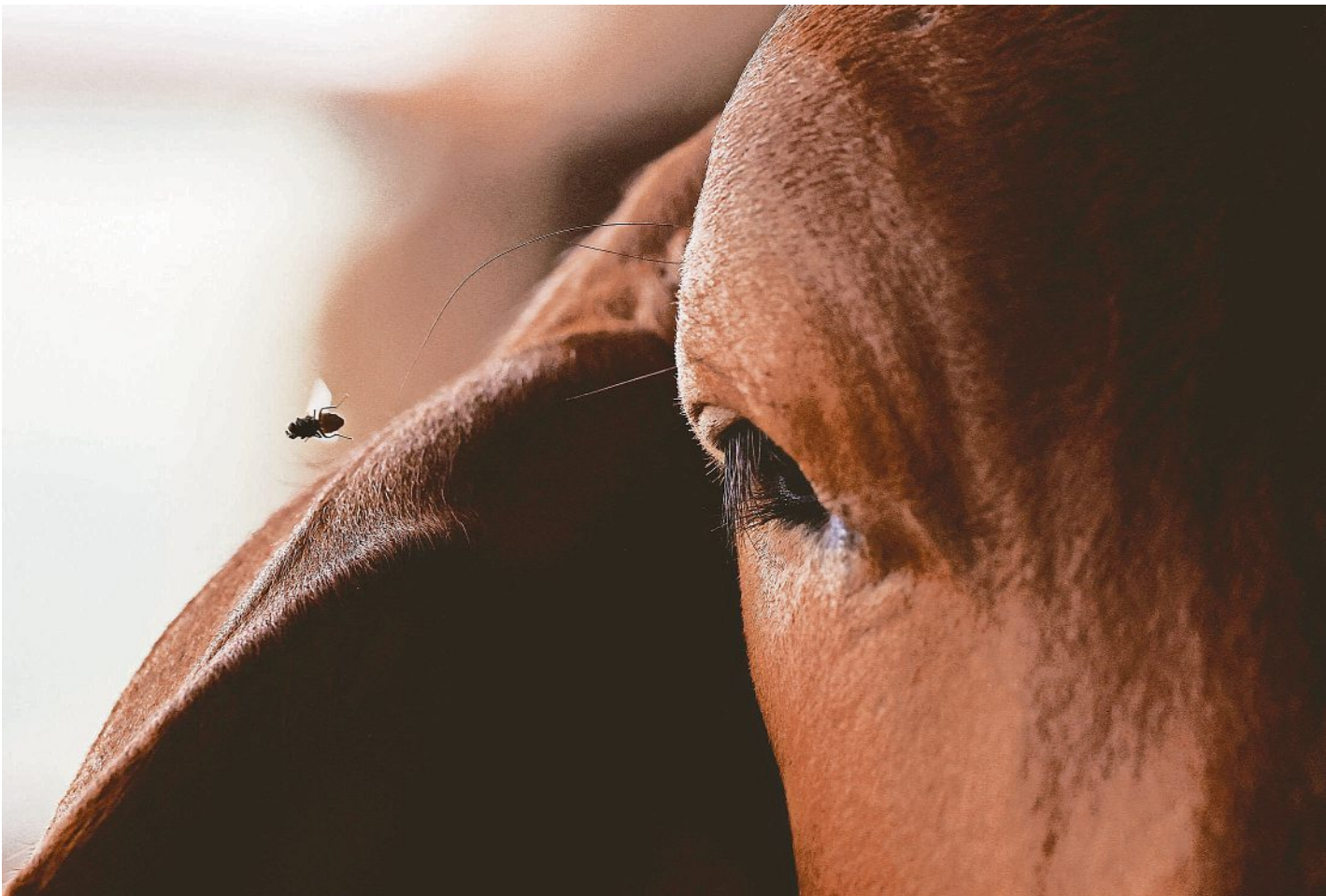
The courtroom on the fourth floor of the Shasta County Courthouse was packed with observers well before Tyler

**See MCCAIN, Page 2A**



**Nikki McCain’s sister Kaye Ford, in turquoise, thanks the community for their support during a press conference at the Shasta County District Attorney’s Office on Aug. 20. Ford and her sister, Chloe Saelee, wearing black, addressed the media.**  
MICHELE CHANDLER/REDDING RECORD SEARCHLIGHT

## Human screwworm case found in U.S.



**A fly flies around a cow July 3 at a cattle ranch in Tuxtla Gutierrez, Chiapas state, Mexico, as the Mexican government and ranchers struggle to control the spread of the flesh-eating screwworm.** DANIEL BECERRIL/REUTERS FILE

### Risk to public health remains low, experts say

**Cassandra Garrison, Tom Polansek and Leah Douglas**  
REUTERS

A human case of flesh-eating screwworm was detected in the United States related to the latest outbreak in Central America, but the chance of people contracting the parasite in the country remains low, according to officials. The patient had recently returned to Maryland after traveling to El Salvador, Andrew G. Nixon, a spokesperson for the U.S. Department of Health and Human Services, told Reuters in an email. The larva of the New World screwworm flies feed on living tissue, mainly affecting animals and livestock. But humans can also become infested by the larva, according to the CDC.

On Aug. 4, the Maryland Department of Health and the Centers for Disease Control and Prevention confirmed the parasite as a New World screwworm but said it is travel-related. “The risk to public health in the United States from this introduction is very low,” Nixon said. In the 20th century, the United States eliminated the screwworm by flying planes over hot spots and dropping boxes of the sterile flies into those areas. The screwworm fly was eradicated in the United States in the 1960s and in Mexico in the 1970s. But Panama, Costa Rica, Nicaragua and Honduras have recently documented cases despite the parasite also being eradicated in Central America in the early 2000s. Travel-related cases of the parasite pose a low threat to the public health of the United States, and the government has not confirmed any cases of screw-

worm infesting animals across the country this year. The case, however, will likely shake the cattle ranchers, beef producers and livestock traders who were already put on alert about potential screwworm infestations. The parasite has since moved into southern Mexico from Central America, causing concern for potential infestation if the fly continues to move northward. An outbreak in the United States would hit the cattle industry and raise already record-high beef prices. The parasite can kill livestock within weeks if not treated. Health officials’ confirmation of the screwworm case came after the U.S. Department of Agriculture announced it will build a facility in Texas, the largest cattle-producing state, that will

**See SCREWWORM, Page 2A**

## Poll: More Americans disapprove of Trump

**Kathryn Palmer**  
USA TODAY

Twice as many Americans say they strongly disapprove of President Donald Trump’s second term than those who strongly approve of the job he’s doing leading the country, according to a new poll. In a survey from YouGov and The Economist conducted Aug. 15-18, two-thirds of respondents said they had strong feelings about Trump – and, increasingly, most of them are negative. The poll surveyed 1,568 U.S. adults and has a margin of error of plus or minus 3.5 percentage points. Among the respondents, 47% said they strongly disapprove of the second-term president compared to 23% who said they strongly approve of him. About 70% of Americans said they either “strongly approve” or “strongly disapprove” of Trump’s job performance, while 27% said they have a more muted opinion. That includes people who either “somewhat approve” or “somewhat disapprove.” When broken down along party lines, most Democrats said they disapprove of Trump, and most Republicans approved of him, continuing what has been a consistent theme in polling since the Republican took office a second time in January. The YouGov/Economist poll found Democrats’ sentiment toward the president was even stronger than Republicans’, with 83% of Democrats

**See TRUMP, Page 2A**

**Subscriber-only eNewspaper**  
The eNewspaper is an electronic copy of your print newspaper. Enjoy every page by going to [redding.com/enewspaper](http://redding.com/enewspaper) or scan this code on your mobile device. You will also find late news and sports in the bonus sections. Check it out today!



**Good morning!**  
Bob Littlefield

Volume 177 | No. 140  
Subscribe 844-900-7107  
©2025 \$2.00

